

DISTRICT HEALTH PROFILE

District Sudhnuti

2009



USAID
FROM THE AMERICAN PEOPLE



The document was made possible through support provided by the United States Agency for international Development (USAID), under the terms of cooperative agreement number 391-A-00-05-01037-00 and sub-agreement number 36098-02 for PAIMAN.

The Pakistan initiative for Mothers and Newborns (PAIMAN) is a 6-year USAID funded project designed to reduce country's maternal and neonatal mortality by making sure that women have access to skilled birth attendants during childhood and throughout postpartum period. PAIMAN works at national, provincial and district levels to strengthen the capacity of public and private health care provider and improve health care system. The PAIMAN program is jointly implemented by John Snow Inc (JSI), Contech International, John Hopkins Center for Communication Program (JHU/CCP), Agha Khan University and Population Council.

Copyright © 2009 by John Snow Inc (JSI). All Rights Reserved

Published by

PAIMAN (Pakistan Initiative for Mothers and Newborns)

House 6, Street 5, F-8/3, Islamabad, Pakistan

Chief of Party-PAIMAN

Dr. Nabeela Ali

For inquiries, please contact

Contech International Health Consultants

2-G Model Town, Lahore, Pakistan

Tel: 042-35888798-99

Fax: 042-35845774

Email: contech@brain.net.pk

Web: www.contech.org.pk

Disclaimer:

This report is made possible by the generous support of the American people through the United States Agency for International Development (USAID). The contents are the responsibility of JSI Research & Training Institute, Inc. and do not necessarily reflect the views of USAID or the United States Government."

Table of Contents

INTRODUCTION	1
1. District at a Glance.....	2
2. Accessibility	3
3. Culture	3
4. Administrative Setup	3
5. Demographic Information	3
6. District Health System	5
a. Organogram.....	5
b. Health Facilities	5
c. Human Resource Position	6
d. Health Indicators	6
e. Budget Allocation and Utilization	7
7. Education Sector.....	7

INTRODUCTION

The purpose of this document is to simplify, package, and communicate complex information on vital statistics and the local burden of disease in a practical, accessible format for district health planning. It is intended for use by District Health Management Teams (DHMTs), federal/ provincial/regional governments and other development partners. Most of the information is provided in tabular format with short explanatory captions and minimum text to provide 'picture' of the current demography and disease burden. The data source is the district health and education departments; however, specific data in this report has been taken from District Census Report 1998.

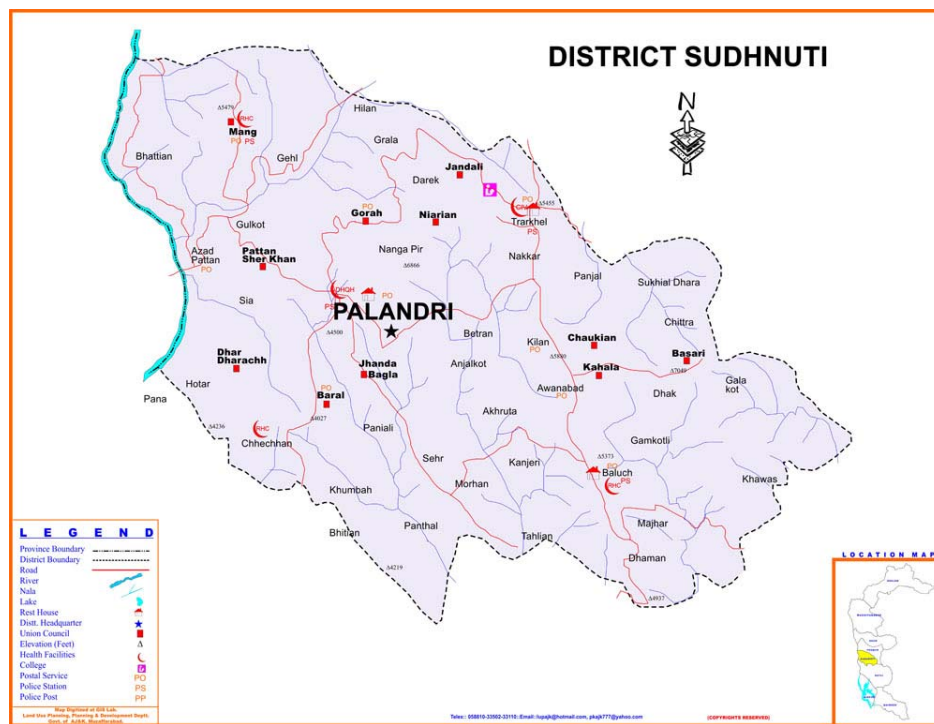
The document has been divided into various sections mentioned below:

- 1. District at a glance:** This section contains general information about the district; for example history, location, area etc.
- 2. Accessibility:** This section facilitates reader in approaching the district from other districts or provincial/federal capital by road, rail or air.
- 3. Culture:** Knowledge of cultural and social customs facilitates in getting access to the general population. This section provides brief about cultural setup and livelihood in the district.
- 4. District Administrative Setup:** A brief on district space administrative setup along with reporting lines is given in this section.
- 5. Demographic Information:** Demographic breakdown of the district population structure, by age and sex, is important from Mother & Newborn Child Health (MNCH) point of view. The information given in this section can be used to predict the target population in upcoming years and plan interventions for improvement of health status in the district.
- 6. District Health Department:** This section provides basic information of district health department. It provides organogram of the department, types of health facilities, human resource and budget information, and selected health indicators.
- 7. District Education Sector:** The information regarding tehsil wise number of educational institutions in public sector is given in the section that can be useful in planning collaborative strategies for improvement of health status in the district.

We anticipate that this document would be helpful for planning district health interventions by PAIMAN and government health authorities.

DISTRICT HEALTH PROFILE

SUDHNUTI



1. District at a Glance

Sudhnuti is a district in Azad Jammu and Kashmir. It was a part of district Poonch which included district Poonch (Rawalkot) and district Bagh. It was declared as a separate administrative unit (District) in 1995. It derives its name from the word Sudhan which is the major tribe of the district. Pallandari is head quarter of the district. It is bounded on the North and East by district Poonch, on the south by district Kotli and on the west by Punjab province of Pakistan.

Total area of district Sudhnuti is 569 Sq. km. The district is entirely mountainous with elevation range between 1500-1800 meters above the sea level. The climate of the district is generally tolerable although there is wide variation in temperature during winter and summer seasons.

2. Accessibility

It is at a distance of 97 kilometers from Rawalpindi via Azad Pattan, and is also connected with Rawalakot by 64 kilometers long metalled road. There is a PWD Rest House located at the hilltop, giving a wonderful view of the picturesque landscape and green mountains all round. All the basic facilities of life are available.



3. Culture

The majority of people living in this area are members of the Sudhan tribe. Traditionally they believe in and revere saints/holy men and visit holy places with enthusiasm.

4. Administrative Setup

In AJK region, the devolution is not granted as in other provinces, so all the departments are provincially controlled.

District Sudhnuti has four Tehsils i.e. Pallandri, Trarkhel, Baluch and Mong. Each tehsil comprises of certain numbers of union councils. There are 19 union councils plus one town in district Sudhnuti. All the union councils are rural.

5. Demographic Information

Total population of the district according to 1998 census report was 214000. With an annual growth rate of 1.99% (www.pndajk.gov.pk), projected population in year 2008 is 276,400 persons. . Union council wise breakup of population is shown below:

Rural Union Council	Male	Female	Total
Town Area Palandari	12620	14842	27462
Janda Bagla	5601	5170	10771
Mong	7587	7004	14591
Gorah	7794	7195	14989
Garala	6413	5920	12333
Baral	7598	6985	14583
Panthal	4721	4358	9079

Rural Union Council	Male	Female	Total
Dhar Drach	8659	7993	16652
Azad Pattan	4271	3942	8213
Dhingroon	5635	5201	10836
Pattan Sher Khan	5494	5071	10565
Papa Nar	8476	7824	16300
Narian	6655	6143	12798
Qillan	5832	5384	11216
Chowkian	7694	7103	14797
Basari	9752	9001	18753
Hamroota	6415	5922	12337
Baluch	8828	8148	16976
Khala	7447	9875	17322
Sher Nalian	7825	7224	15049
Total	143731	132672	276400

Following table shows the demographic information of different population groups in the district:

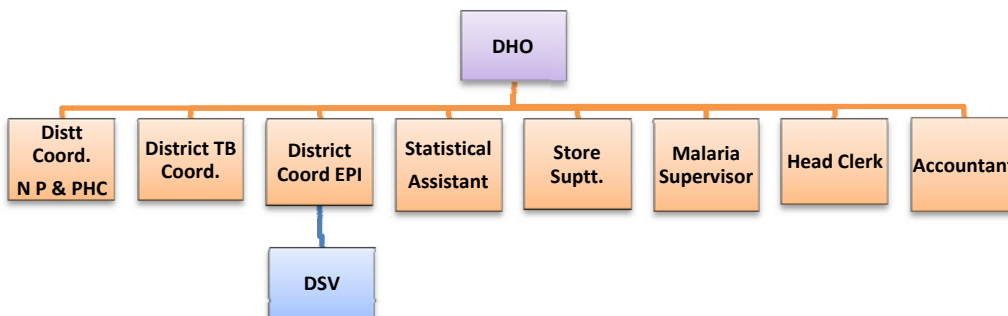
Population Groups	Standard Demographic (%)	Estimated Population 2008
New born	4	11,056
0-11 months	2.24	6,191
12-23 months	-	-
Under 5 years	15.87	43,865
0-14 years	44.04	121,727
Women in child bearing age (15-49 years)	21.8	60,255
Married Child bearing age	15.5	42,842
Pregnant Women	4.5	12,438

6. District Health System

The health care delivery network is managed by the District Health Officer who is assisted by district coordinators of vertical program (EPI, TB, NP-FP &PHC), malaria Supervisor and Statistical Assistant.

a. Organogram

The organizational structure of district health department is given below:



b. Health Facilities

The number of health care facilities in district Sudhnuti has been given below:

Type	No.	No. of beds
DHQH	1	94
THQH	-	-
RHCs	3	30
BHUs	10	-
MCHCs	13	-
Civil Dispensaries	10	-
Reproductive Health Services – A (RHS-A)	3	3
Civil Hospital	1	20
First Aid Posts	42	-
EPI Centre	25	-
TB Leprosy Centre	7	-
Dental Clinics	4	4

c. Human Resource Position

Total health care personnel of selected positions working in the district are detailed in the following table:

Post	Number	
	Sanctioned	Filled (Dec. 2008)
Gynecologist	1	1
Pediatrician	-	-
Anesthetist	1	1
Radiologist	-	-
Women Medical Officers (WMOs)	-	-
Medical Officers (MOs)	23	3
Blood Transfusion Officers (BTOs)	-	-
Lady Health Visitors (LHVs)	17	17
Nurses	4	4
Midwives	4	4
Lady Health Workers (LHWs)	229	223
Laboratory Technician	4	4
Health Technician	46	46
Vaccinators	32	32

d. Health Indicators

Indicator	Data from Jan-Mar 2009 (Source: Baseline MIS Survey-PAIMAN)
Number of ANC cases registered	1469
Number of pregnant women provided TT 2 immunization	6707
PNC cases visited by LHW within 24hrs of delivery	754
Number of children <1 yr receiving DPT 3 immunization	2291
Number of children <5 yr treated for diarrhea at public HF	1047
Number of children <5 yr treated for pneumonia at public HF	779
Number of facilities reporting stock out of contraceptive commodities (DHQH/THQH/RHCs)	5

Indicator	Data for year 2008 (Source: National Program for FP & PHC)
Total deliveries conducted by skilled attendant	2636
Number of live births	3841
Number of still births	130
Total obstetric (maternal) deaths	5
Total newborn deaths	76

e. Budget Allocation and Utilization

Total budget allocation of current year for District Health Department in district Sudhnuti is as under:

Item	Year 2008-09 (Rs)
Total District Health Sector Budget	49,585,000
Development	1,023,000
Non-Development	48,562,000

7. Education Sector

Education has been a priority of the Govt. of Azad Jammu & Kashmir. As a result, AJ&K's literacy rate is well above 60% which is significantly higher than the national average of Pakistan.

Tehsil	Number of Institutions				
	Primary school	Middle school	High school	College	University
District Sudhnuti	356	82	49	11	-