

DISTRICT HEALTH PROFILE

District Dera Ismail Khan

2009



USAID
FROM THE AMERICAN PEOPLE



The document was made possible through support provided by the United States Agency for international Development (USAID), under the terms of cooperative agreement number 391-A-00-05-01037-00 and sub-agreement number 36098-02 for PAIMAN.

The Pakistan initiative for Mothers and Newborns (PAIMAN) is a 6-year USAID funded project designed to reduce country's maternal and neonatal mortality by making sure that women have access to skilled birth attendants during childhood and throughout postpartum period. PAIMAN works at national, provincial and district levels to strengthen the capacity of public and private health care provider and improve health care system. The PAIMAN program is jointly implemented by John Snow Inc (JSI), the Contech International, John Hopkins Center for Communication Program (JHU/CCP), Agha Khan University and Population Council.

Copyright © 2009 by John Snow Inc (JSI). All Rights Reserved

Published by

PAIMAN (Pakistan Initiative for Mothers and Newborns)

House 6, Street 5, F-8/3, Islamabad, Pakistan

Chief of Party-PAIMAN

Dr. Nabeela Ali

For inquiries, please contact

Contech International *Health Consultants*

2-G Model Town, Lahore, Pakistan

Tel: 042-35888798-99

Fax: 042-35845774

Email: contech@brain.net.pk

Web: www.contech.org.pk

Disclaimer:

This report is made possible by the generous support of the American people through the United States Agency for International Development (USAID). The contents are the responsibility of JSI Research & Training Institute, Inc. and do not necessarily reflect the views of USAID or the United States Government."

Table of Contents

INTRODUCTION	1
1. District at a Glance	2
2. Accessibility	3
3. Culture	3
4. District Administrative Setup	4
5. Demographic Information	4
6. District Health System	6
a. Organogram	6
b. Health Facilities	7
c. Human Resource Position	7
d. Health Indicators	8
e. Budget Allocation and Utilization	9
7. Education Sector	9

INTRODUCTION

The purpose of this document is to simplify, package, and communicate complex information on vital statistics and the local burden of disease in a practical, accessible format for district health planning. It is intended for use by District Health Management Teams (DHMTs), federal/ provincial/regional governments and other development partners. Most of the information is provided in tabular format with short explanatory captions and minimum text to provide 'picture' of the current demography and disease burden. The data source is the district health and education departments; however, specific data in this report has been taken from District Census Report 1998.

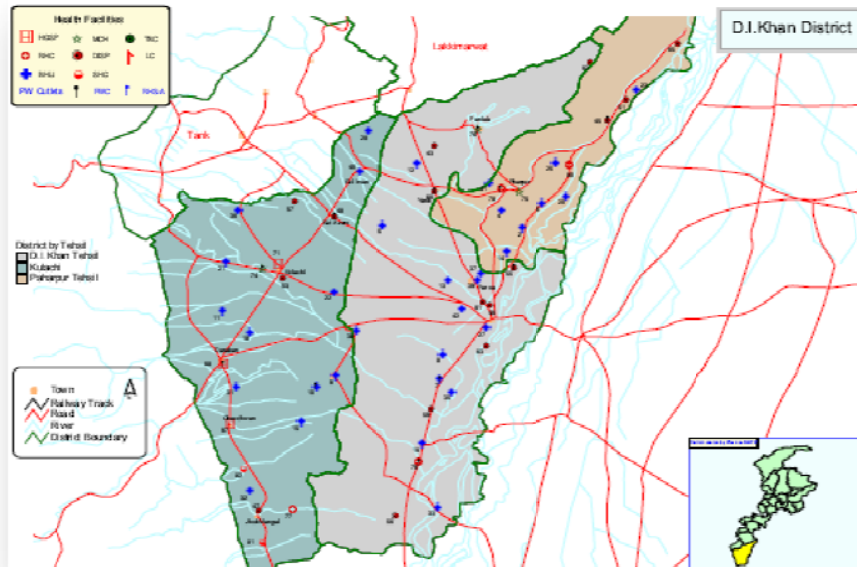
The document has been divided into various sections mentioned below:

1. **District at a glance:** This section contains general information about the district; like history, location, area etc.
2. **Accessibility:** This section facilitates reader in approaching the district from other districts or provincial/federal capital by road, rail or air.
3. **Culture:** Knowledge of cultural and social customs facilitates in getting access to the general population. This section provides brief about cultural setup and livelihood in the district.
4. **District Administrative Setup:** A brief on district administrative setup along with reporting lines is given in this section.
5. **Demographic Information:** Demographic breakdown of the district population structure, by age and sex, is important from Mother & Newborn Child Health (MNCH) point of view. The information given in this section can be used to predict the target population in upcoming years and plan interventions for improvement of health status in the district.
6. **District Health Department:** This section provides basic information of district health department. It provides organogram of the department, types of health facilities, human resource and budget information, and selected health indicators.
7. **District Education Sector:** The information regarding tehsil wise number of educational institutions in public sector is given in the section that can be useful in planning collaborative strategies for improvement of health status in the district.

We anticipate that this document would be helpful for planning district health interventions by PAIMAN and government health authorities.

DISTRICT HEALTH PROFILE

D I Khan



1. District at a Glance

Dera Ismail Khan is the south most districts of North-West Frontier Province of Pakistan, the capital of the district is the town of Dera Ismail Khan. The district of Dera Ismail Khan is bounded on the east by District Bakhar & Mianwali of Punjab Province, to the southwest by South Waziristan and Zoab district of Baloachistan to the northwest by Tank and Lakki Marwat districts. The district has an area of 7,326 km². It is an old town established by a Baloch leader Mr. Ismail from famous Mirani tribe.

Despite being situated on the bank of the Indus River, the area is dry and very hot. The city lacks basic urban infrastructure like potable water, fuel gas, railroads and adequate health care. It is located on the Indus Highway which links Pakistan



City of DI Khan



Tomb at Lal Mohra
2 | Page

from North to South along West Bank of River Indus. There is very little agriculture and virtually no industries.

This area is rich in ancient history, as proven by the excavation of Rahman Deri. Archeological relics at the Kafir Kot Fort and nearby temple provide evidence of Hindu Shahi rule.



Dhakki Date Tree

Amongst food products, DI Khan is famous for the dates that it produces. One of best soghaat of this district is "Dhakki Date" which is exported to mid-east, USA and Europe.

2. Accessibility

DI Khan is 340 km south of Peshawar and with the partly constructed Indus Highway, the journey time is around five hours from Peshawar. The city is connected to Bannu via highway, which further connects it to the provincial capital of Peshawar via Kohat and Darra Adam Khail. Another road connects D.I.Khan to Mianwali through Chashma Barrage. The third major road connects it to Bhakkar in Punjab, situated on the eastern bank of Indus River. The bridge on the Indus River was constructed in early 1980s, before which the approach to Bhakkar was made through a boat bridge. The nearest railway station is 20km away at Darya Khan on the eastern and opposite bank of the Indus River. There is also a local domestic airport and twice a week flights are available from Islamabad.

3. Culture

Dera Ismail Khan is a relatively less developed area of Pakistan and most of the people live below poverty line. Many people are serving in Army. The population is a mix of ethnic Balochi and pashtun segments, while a significant segment of Urdu speaking immigrants is also present. Urdu, the national language is understood and spoken by all, while Seraiki is the native language and language of people. The semi-arid area of district Dera Ismail Khan (DI Khan) is mostly inhabited by rural communities caught in a vicious cycle of extreme poverty. Most of the communities are dependent on natural resources, which are decreasing rapidly due to shortage of water and overexploitation.

Dera Ismail Khan is full of religious sentiments and a number of Islamic Madrassas (religious schools) operate in the neighbourhood and they saw a mushroom growth during Afghan War and Taliban era.

4. District Administrative Setup

Like any other district in the country, district D.I.Khan is headed by District Coordination Officer (DCO) assisting Zila Nazim and is accountable to him. DCO, appointed by provincial government from the federal or provincial civil service, coordinates with Executive District Officers (EDOs), who head each of the district offices including health.

District D.I.Khan has five tehsils. Each tehsil comprises of certain numbers of union councils. There are 47 union councils in district D.I.Khan with 34 rural and 13 urban.

5. Demographic Information

District has a population of 852,995 as per 1998 Census. Population in year 2008 is about 1,167,317.

Names of Tehsils are as under:

1. Choudwan
2. Darban kalan
3. Paniala
4. Darazinda
5. Kulachi

Names of Union councils with population in urban and rural areas are as follows:

S#	Urban Union Council	Male	Female	Total
1	Dera City 1	9914	9525	19439
2	Dera City 2	13804	13262	27066
3	Dera City 3	9806	9421	19227
4	Dera City 4	17325	16645	33970
5	Dera City 5	10472	10061	20533
6	Dera Jaat 1	12168	11691	23859
7	Dera Jaat 2	11110	10674	21784
8	Kulachi	13493	12964	26457
9	Muriyali	14282	13722	28004
10	Dewala	14572	14000	28572
11	Paniyala	10493	10081	20574
12	Paroa	13646	13110	26756
13	Pharpur	11375	10929	22304
TOTAL		162460	156085	318545

S#	Rural Union Councils	Male	Female	Total
1	Shorkot	11669	11211	22880
2	Ratta kulachi	10896	10468	21364
3	Rakh Mandhran	15593	14982	30575
4	Kaich	9054	8699	17753
5	Dhap shumali	15713	15096	30809
6	Maddi	11593	11138	22731
7	Yarak	12534	12042	24576
8	Band Kurai	17219	16544	33763
9	Gilloti	11026	10594	21620
10	Abdul Khail	10614	10197	20811
11	Kotla Saidan	13650	13115	26765
12	Malana	15458	14851	30309
13	Baggi Qammar	7891	7581	15472
14	Draban Kalan	14288	13727	28015
15	Chudwan	13002	12492	25494
16	Naiwaila	13238	12718	25956
17	Mirran	16159	15525	31684
18	Marrah	13789	13249	27038
19	Kot Jaai	14248	13689	27937
20	Kath garh	12621	12127	24748
21	Bhagwani	13186	12668	25854
22	Kiiri Khasour	14010	13460	27470
23	Bilot sharif	11455	11005	22460
24	Lacchra	10785	10363	21148
25	Kurrai	12709	12211	24920
26	Laar	13382	12858	26240
27	Kirri shamozai	12844	12340	25184
28	Looni	13258	12738	25996
29	Gara Esa Khan	10350	9944	20294
30	Hissam	8547	8211	16758
31	Hathala	11710	11250	22960
32	Chehkan	13041	12530	25571
33	Zandani	13867	13323	27190
34	Musazai	13478	12949	26427
TOTAL		432877	415895	848772
GRAND TOTAL		595337	571980	1167317

Following table shows the demographic information of different population groups in the district:

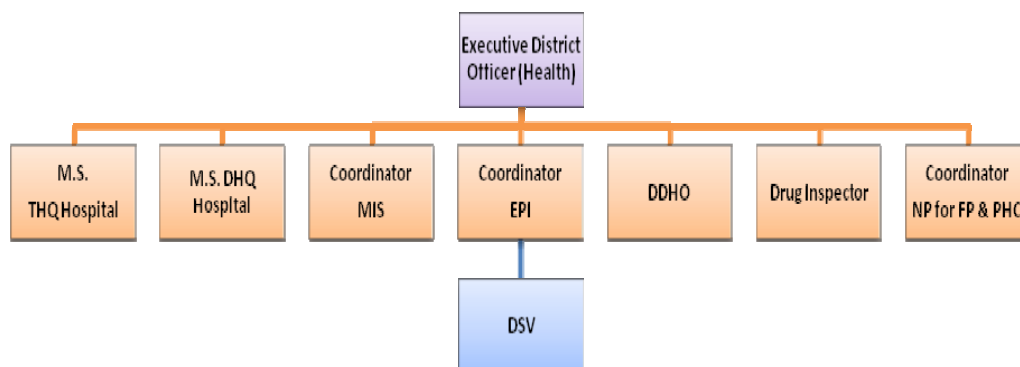
Population Groups	Standard Demographic (%)	Estimated Population (2008)
New born	4.0	80,860
0-11 months	2.24	45,281
12-23 months	-	-
Under 5 years	15.87	320,810
0-14 years	44.04	890,263
Women in child bearing age (15-49 years)	21.8	440,684
Married Child bearing age	15.5	313,331
Pregnant Women	4.5	90,967

6. District Health System

The health care delivery network is headed by Executive District Officer (Health). Being the team leader, the EDO Health is assisted by the Deputy District Officers Health (DDOH), the Medical Superintendent (MS) of District Headquarter (DHQ) Hospital and Tehsil Headquarter Hospitals (THQ) and district coordinators of vertical programs (EPI, MIS, NP-FP &PHC).

a. Organogram

The organizational structure of district health department is given below:



b. Health Facilities

The number of health care facilities in district D I Khan is given below:

Type	No.
DHQ Hospital	1
THQ Hospitals	1
RHCs	4
BHUs	29
Civil Dispensaries	26
MCHCs	5
Civil Hospital	4
Reproductive Health Centers	3
S.H.C	2

Total number of patient beds available in different health facilities of District Dera Ismail Khan is as under:

Name of Institution	# of beds
Facilities under EDO-Health, DI Khan	88
District Teaching Headquarter Hospital DI Khan	351
Mufti Mahmood Memorial Hospital DI Khan	200
TOTAL	639

c. Human Resource Position

Total health care personnel of selected positions working in the district are detailed in the following table:

Posts	Number	
	Sanctioned	Filled
Gynecologist	2	2
Pediatrician	1	1
Anesthetist	2	2
Radiologist	1	1
Women Medical Officers (WMOs)	13	13
Medical Officers (MOs)	56	56
Blood Transfusion Officers (BTOs)	0	0
Lady Health Visitors (LHVs)	53	53

Posts	Number	
	Sanctioned	Filled
Nurses	90	90
Midwives	35	35
Lady Health Workers (LHWs)	700	631
Laboratory Technician	11	11
Health Technicians	86	86
Vaccinators	49	49

d. Health Indicators

Indicator	Data for Jan-Mar 2009 <i>(Source: Baseline MIS Survey-PAIMAN)</i>
Number of ANC cases registered	935
Number of pregnant women provided TT 2 immunization	1794
PNC cases visited by LHW within 24hrs of delivery	2495
Number of children <1 yr receiving DPT 3 immunization*	987
Number of children <5 yr treated for diarrhea at public HF's	2172
Number of children <5 yr treated for pneumonia at public HF's	3441
Number of facilities reporting stock out of contraceptive commodities (DHQH/THQH/RHCs)	8
Indicator	Data Year 2008 <i>(Source: National Program for FP & PHC)</i>
Total deliveries conducted by skilled attendant	7772
Number of live births	9944
Number of still births	319
Total obstetric (maternal) deaths	14
Total newborn deaths	197

e. Budget Allocation and Utilization

Total budget allocation of current year for District Health Department in district D I Khan is as under:

Item	Year 2008-09 (Rs)
Total	103810770/-
Developmental (with pay & allowances)	97293450/-
Non-Developmental With EDO(H)	6517320/-
With MS (with pay & allowances)	4415920/-

7. Education Sector

Dera Ismail Khan is also home to one of the notable universities of Pakistan; the Gomal University. The university is spread over acres of land outside the city and is a small village in itself. Gomal University was set-up in 1947. Apart from this well known university, there are two degree colleges for boys and two for girls in Dera Ismail Khan. One degree college for boys is located in Kulachi and other in Paharpur. The following is a summary of the available educational facilities:

Number of Institutions												
Schools										College		Univ.
Primary		Middle		High		Elementary		Higher secondary		Boys	Girls	
Boys	Girls	Boys	Girls	Boys	Girls	Boys	Girls	Boys	Girls			
774	368	59	22	58	19	1	1	4	02	4	2	01

Source: www.fida.com.pk/deraismail.htm