

DISTRICT HEALTH PROFILE

District Bhimber

2009



USAID
FROM THE AMERICAN PEOPLE



The document was made possible through support provided by the United States Agency for international Development (USAID), under the terms of cooperative agreement number 391-A-00-05-01037-00 and sub-agreement number 36098-02 for PAIMAN.

The Pakistan initiative for Mothers and Newborns (PAIMAN) is a 6-year USAID funded project designed to reduce country's maternal and neonatal mortality by making sure that women have access to skilled birth attendants during childhood and throughout postpartum period. PAIMAN works at national, provincial and district levels to strengthen the capacity of public and private health care provider and improve health care system. The PAIMAN program is jointly implemented by John Snow Inc (JSI), Contech International, John Hopkins Center for Communication Program (JHU/CCP), Agha Khan University and Population Council.

Copyright © 2009 by John Snow Inc (JSI). All Rights Reserved

Published by

PAIMAN (Pakistan Initiative for Mothers and Newborns)

House 6, Street 5, F-8/3, Islamabad, Pakistan

Chief of Party-PAIMAN

Dr. Nabeela Ali

For inquiries, please contact

Contech International *Health Consultants*

2-G Model Town, Lahore, Pakistan

Tel: 042-35888798-99

Fax: 042-35845774

Email: contech@brain.net.pk

Web: www.contech.org.pk

Disclaimer:

This report is made possible by the generous support of the American people through the United States Agency for International Development (USAID). The contents are the responsibility of JSI Research & Training Institute, Inc. and do not necessarily reflect the views of USAID or the United States Government."

Table of Contents

INTRODUCTION	1
1. District at a Glance.....	2
2. Accessibility	3
3. Culture	3
4. Administrative Setup	3
5. Demographic Information	3
6. District Health System	4
a. Organogram.....	4
b. Health Facilities	5
c. Human Resource Position	5
d. Health Indicators	6
e. Budget Allocation and Utilization.....	7
7. Education Sector.....	8

INTRODUCTION

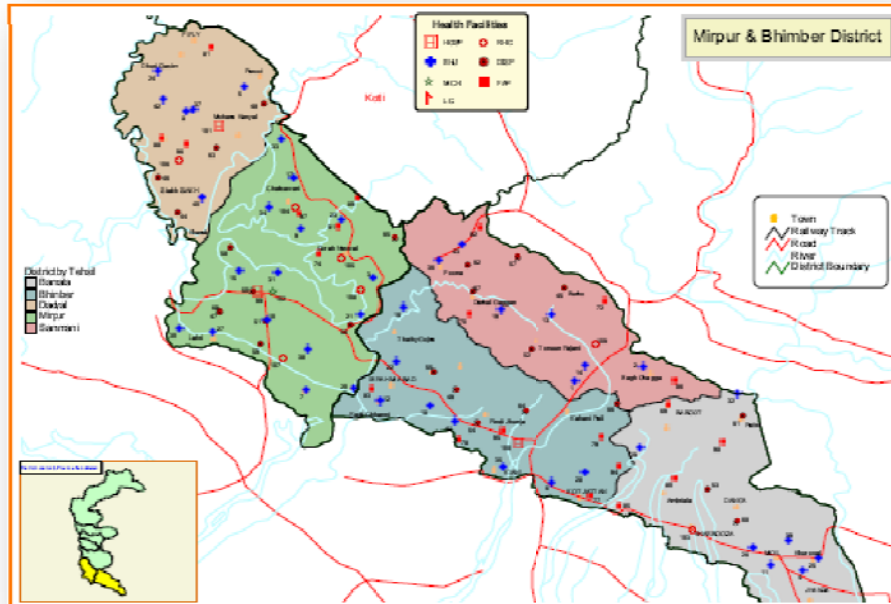
The purpose of this document is to simplify, package, and communicate complex information on vital statistics and the local burden of disease in a practical, accessible format for district health planning. It is intended for use by District Health Management Teams (DHMTs), federal/ provincial/regional governments and other development partners. Most of the information is provided in tabular format with short explanatory captions and minimum text to provide 'picture' of the current demography and disease burden. The data source is the district health and education departments; however, specific data in this report has been taken from District Census Report 1998.

The document has been divided into various sections mentioned below:

1. **District at a glance:** This section contains general information about the district; like history, location, area etc.
2. **Accessibility:** This section facilitates reader in approaching the district from other districts or provincial/federal capital by road, rail or air.
3. **Culture:** Knowledge of cultural and social customs facilitates in getting access to the general population. This section provides brief about cultural setup and livelihood in the district.
4. **District Administrative Setup:** A brief on district administrative setup along with reporting lines is given in this section.
5. **Demographic Information:** Demographic breakdown of the district population structure, by age and sex, is important from Mother & Newborn Child Health (MNCH) point of view. The information given in this section can be used to predict the target population in upcoming years and plan interventions for improvement of health status in the district.
6. **District Health Department:** This section provides basic information of district health department. It provides organogram of the department, types of health facilities, human resource and budget information, and selected health indicators.
7. **District Education Sector:** The information regarding tehsil wise number of educational institutions in public sector is given in the section that can be useful in planning collaborative strategies for improvement of health status in the district.

We anticipate that this document would be helpful for planning district health interventions by PAIMAN and government health authorities.

DISTRICT HEALTH PROFILE BHIMBER



1. District at a Glance

Bhimber is the southernmost of the eight districts of Azad Kashmir. It was administratively declared as an independent district in 1995. Prior to independence, it was a sub division of district Mirpur. This district is very rich in archaeology and wildlife, whereas, its enchanting valleys present panoramic views to the visitors.

Bhimber district is bounded on the north by Jammu and Nowshera districts of Indian occupied Kashmir (I.O.K), on the east by Jammu district of I.O.K. and district Sialkot of Punjab (Pakistan), on the south by Gujrat and Jhelum districts and Mirpur and Kotli districts on the west.

Total area of district Bhimber is 1,516 Sq. km. In this area mainly the profession of the people is agriculture and cattle farming. Presently, there is a trend to go abroad in youth.

2. Accessibility

Bhimber town is located at a distance of 50 kilometers from Mirpur and 166 kilometers from Rawalpindi. This town is connected both with Mirpur & Gujrat through all weather black top roads. All the basic amenities of life are available in Bhimber.



A view of Bhimber

3. Culture

The people of this area are basically agriculturalist, belonging to Jatt and Rajput castes, with strong cultural links to the Pothwar region of Pakistan. Therefore culture of the district resembles that of the adjoining areas of Punjab. Tribal loyalty is important to most people. Traditionally, marriages are arranged within ones tribe, and inter tribal marriages are rare. The people of Bhimber are militant and the area was traditionally a recruiting ground for the British Indian army. The people of the district are intelligent, ingenious, hard working, mobile and skilful.



Street in Bhimber

4. Administrative Setup

In AJK region, the devolution is not granted as in other provinces so all the departments are provincially controlled.

District Bhimber has three Tehsils i.e. Dudial, Samahni and Bhimber. Each tehsil comprises of certain numbers of union councils. There are 19 union councils in district Bhimber with 18 rural and 1 urban.

5. Demographic Information

According to 1998 census, the total population of the district stands at 297,000. Population for 2008 is 387,800 persons. Rural and urban distribution of population is as under:

District Bhimber	1998 Censes		
	Male	Female	Total
Rural	140264	141117	281381
Urban	8241	7714	15955
Total	148505	148831	297336

Union council wise breakup of population is shown below:

S. No.	Urban Union Council	Total
1	Bhimber	18,936

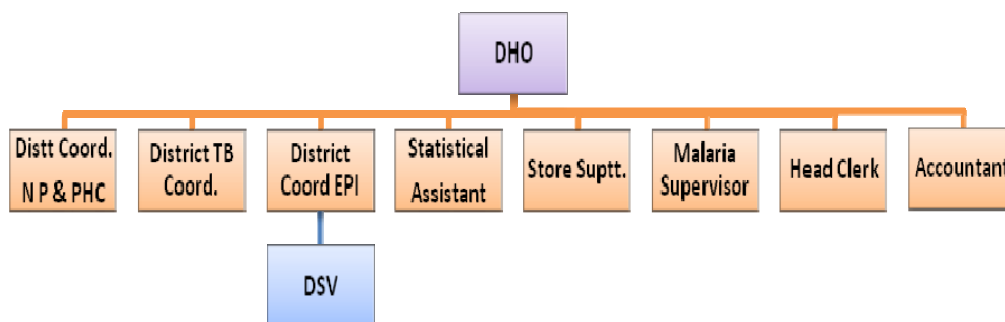
S. No.	Rural Union Council	Total
1.	Bhimber Rajani	24,358
2.	Dhander Kot	23,282
3.	Dhoura	22,885
4.	Panjeri	21,514
5.	Kalri	20,491
6.	Kasgumma	9,955
7.	Barnal	28,042
8.	Maloot	20,780
9.	Patni	20,600
10.	Watala	21,601
11.	Pangali	9,746
12.	Ifitkhar Abad Shamali	11,792
13.	Ifitkhar Abad Junubi	13,091
14.	Samani	29,679
15.	Choki	25,154
16.	Poona	29,933
17.	Khumbah	17,639
18.	Baghsar	18,318

6. District Health System

The health care delivery network is managed by the District Health Officer who is assisted by district coordinators of vertical program (EPI, TB, NP-FP &PHC), Malaria Supervisor and Statistical Assistant.

a. Organogram

The organizational structure of district health department is given below:



b. Health Facilities

The number of health care facilities in district Bimber is given below:

Type	No.	No. of beds
DHQH	1	150
THQH	1	50
RHCs	2	24
BHUs	25	-
MCHCs	15	-
Dispensaries	13	-
Reproductive Health Services-A (RHS-A)	1	-
Family Welfare Centres	3	-
FAP	48	-
MSU	1	-

c. Human Resource Position

Total health care personnel of selected positions working in the district are as under:

Posts	Number	
	Sanctioned	Filled (Dec. 2008)
Gynecologist	2	1
Pediatrician	1	2
Anesthetist	1	1
Radiologist	-	1
Women Medical Officers (WMOs)	6	6
Medical Officers (MOs)	25	25
Blood Transfusion Officers (BTOs)	1	-
Lady Health Visitors (LHVs)	17	18

Posts	Number	
	Sanctioned	Filled (Dec. 2008)
Nurses	23	22
Midwives (DAI)	4	4
Lady Health Workers (LHWs)	319	315
Laboratory Technician	5	5
Health Technician	48	49
Vaccinators	31	31

Following table shows the demographic information of different population groups in the district:

Population Groups	Standard Demographic (%)	Estimated Population (2008)
New born	4.0	15,512
0-11 months	2.24	8,687
12-23 months	-	-
Under 5 years	15.87	61,544
0-14 years	44.04	170,787
Women in child bearing age (15-49 years)	21.8	84,540
Married Child bearing age	15.5	60,109
Pregnant Women	4.5	17,451

d. Health Indicators

Data on following indicators is obtained from district reports of National Program for FP and PHC (year 2008) and through a Baseline MIS Survey conducted under PAIMAN for the period of Jan-Mar 2009.

Indicator	Data from Jan-Mar 2009 (Source: Baseline MIS Survey-PAIMAN)
Number of ANC cases registered	12923
Number of pregnant women provided TT 2	2429

Indicator	Data from Jan-Mar 2009 <i>(Source: Baseline MIS Survey-PAIMAN)</i>
immunization	
PNC cases visited by LHW within 24hrs of delivery	1187
Number of children <1 yr receiving DPT 3 immunization	2976
Number of children <5 yr treated for diarrhea at public HF*s	2057
Number of children <5 yr treated for pneumonia at public HF*s	4798
Number of facilities reporting stock out of contraceptive commodities (DHQH/THQH/RHCs)	4
Indicator	Data for year 2008 <i>(Source: National Program for FP & PHC)</i>
Total deliveries conducted by skilled attendant	3958
Number of live births	4994
Number of still births	565
Total obstetric (maternal) deaths	7
Total newborn deaths	181

e. Budget Allocation and Utilization

Total budget allocation of current year for District Health Department in district Bhimber is as under:

Item	Year 2008-09
Total District Health Sector Budget	Rs.49,877,000
Development	-
Non-Development	Rs.49,877,000

7. Education Sector

Tehsil	Primary School	Middle School	High School	College	University
Bhimber	159	36	29	5	-
Samani	143	37	20	3	-
Dudial	144	31	18	3	-